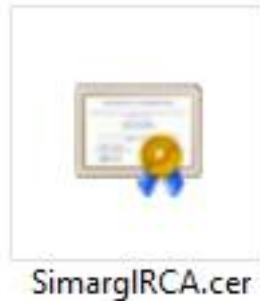
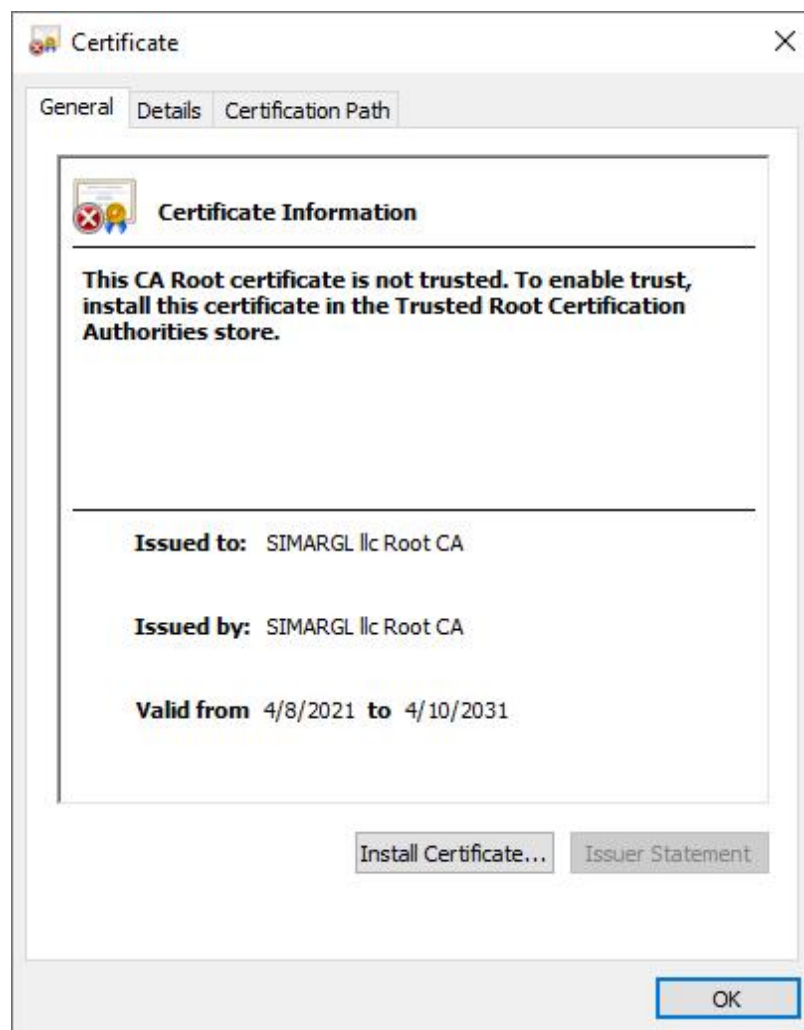


How to Install a Root Certificate in Windows

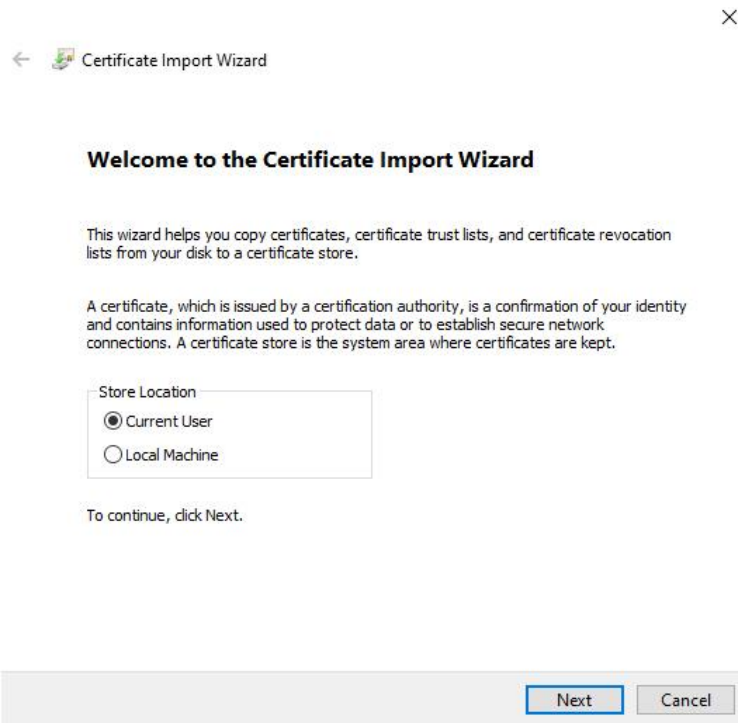
After you download Root certificate from <https://simargl.llc/repository> It should be imported following the next steps:



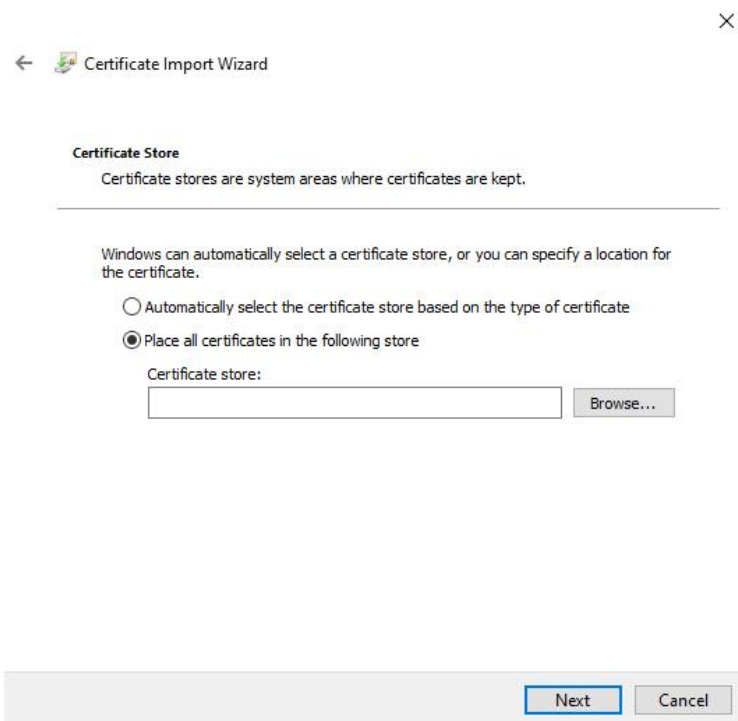
Root certificate file has .cer extension. Double-click the file.



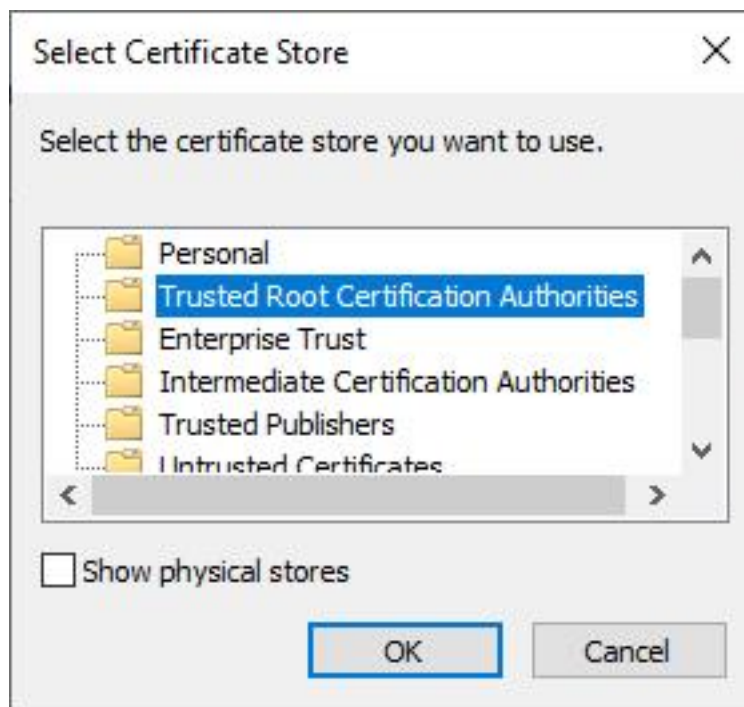
Click "Install Certificate..."



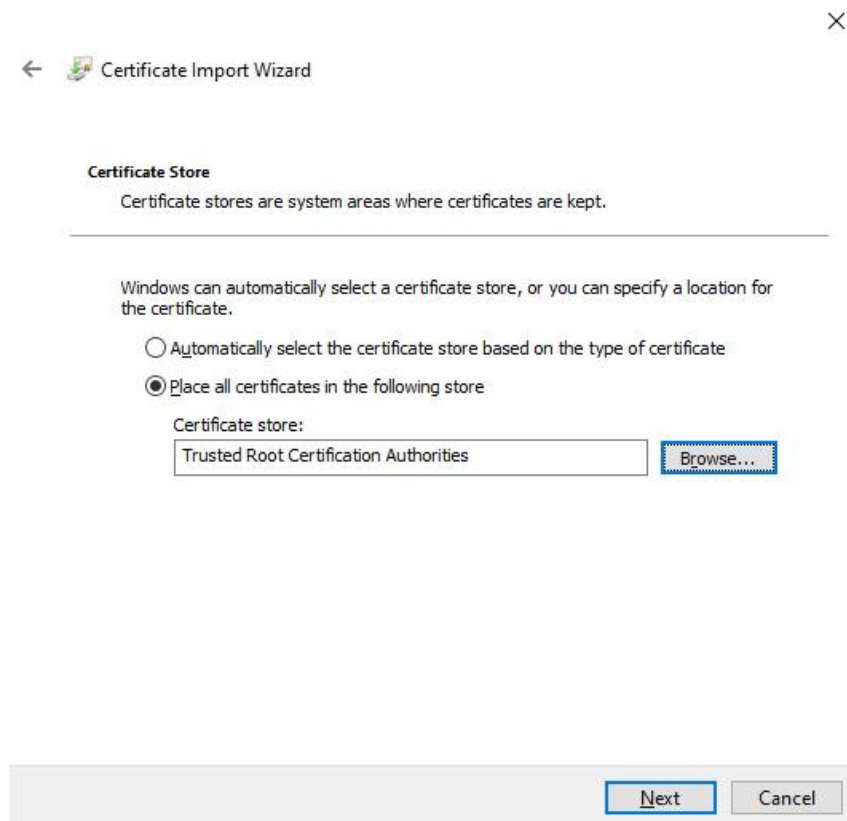
Click “Next” button.



Select “Place all certificates in the following store” and click “Browse..” button.



Select "Trusted Root Certification Authorities" and click "OK" button.



Click "Next" button.

Completing the Certificate Import Wizard

The certificate will be imported after you click Finish.

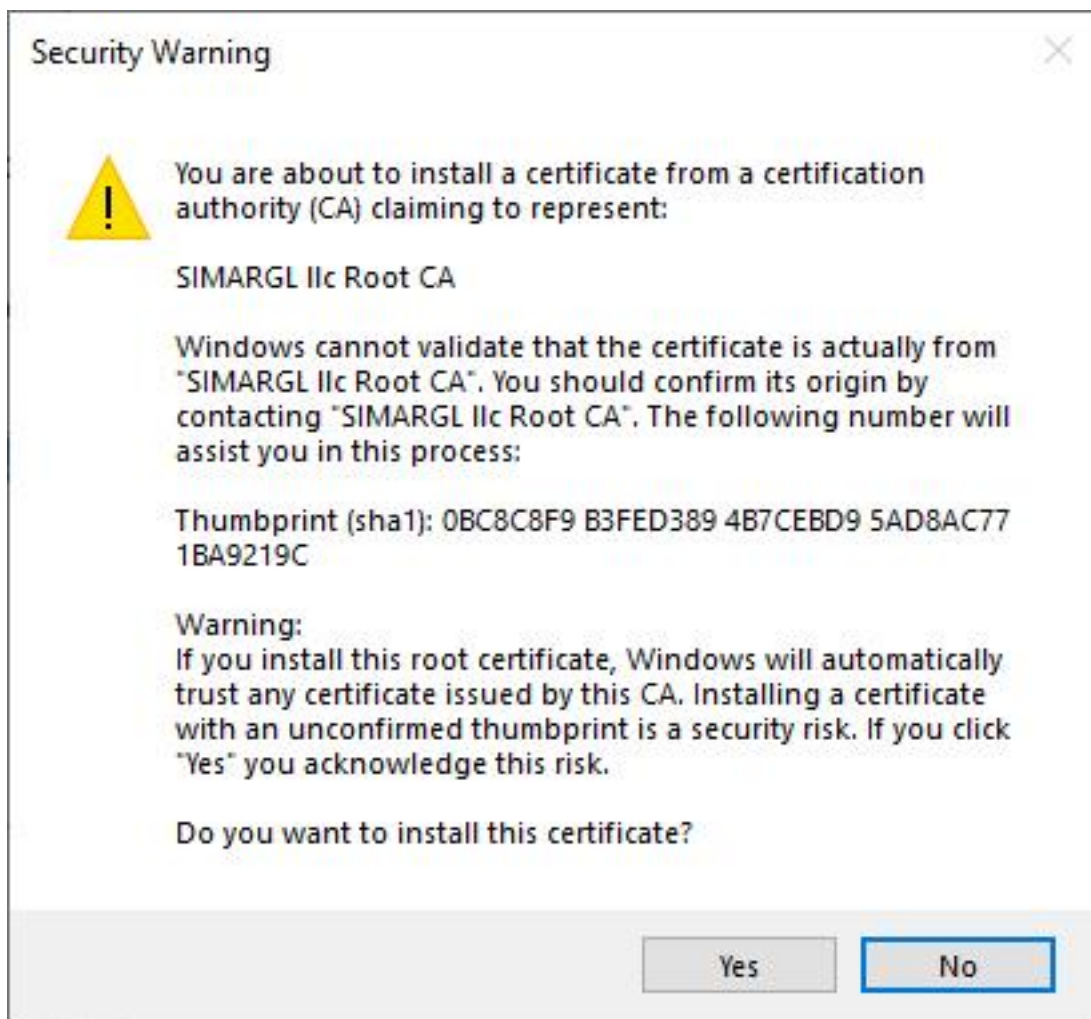
You have specified the following settings:

Certificate Store Selected by User	Trusted Root Certification Authorities
Content	Certificate

Finish

Cancel

Click "Finish" button.



Review Thumbprint(sha1), be sure it is matched to Thumbprint record on Repository page.

<https://simargl.ilc/repository>

Click "YES" button.

